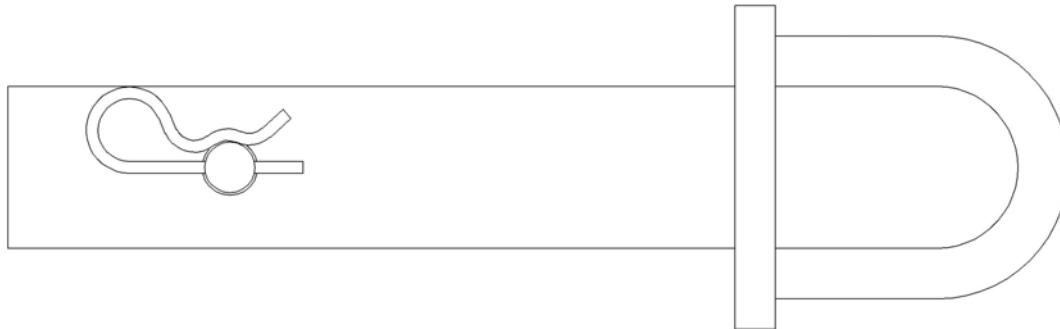




Class III Receiver Hitch Anchor
Part# 00640

SPECIFICATIONS
PAGE 1 OF 1



DESCRIPTION

The Hitch Anchor is designed to be a single point fall arrest attachment point for a single worker when no other means of tying off are feasible. The anchor is acceptable for fall arrest and fall restraint and is compatible with vertical rope lifelines and self retracting lifelines. The anchor should only be used on stationary vehicles that have been properly locked out and tagged out.

GENERAL SPECIFICATIONS

| Item | Description | Tested At |
|-------|--------------------------|-----------|
| Pin | 5/8" Hardened Steel | N/A |
| Steel | A36 - Powder Coated | N/A |
| Loop | 5/8" A36 - Powder Coated | N/A |

Capacity—1 worker, max weight 310lbs including tools and equipment

Technical References: Meets OSHA 1926 Subpart M, ANSI Z359.1-2007