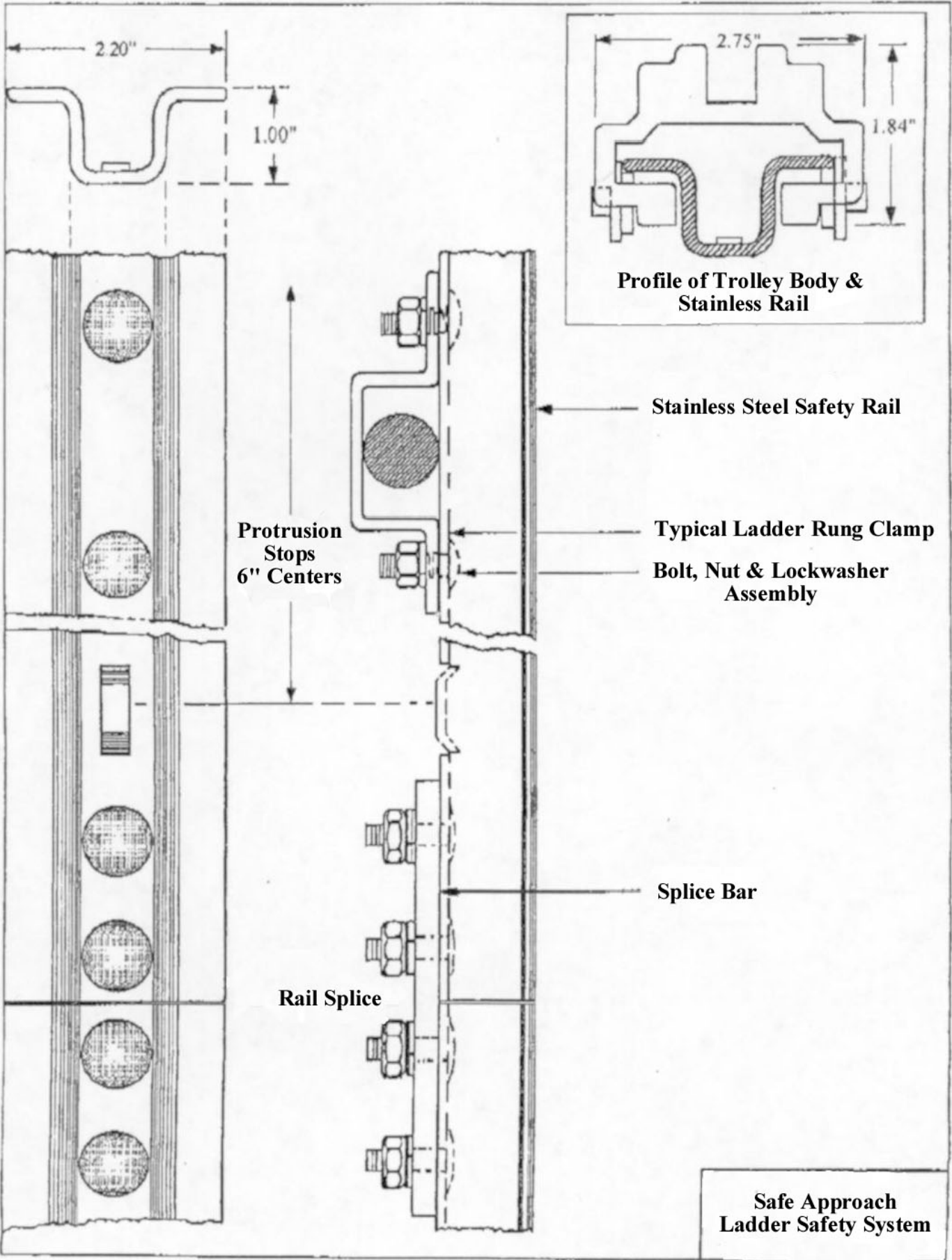
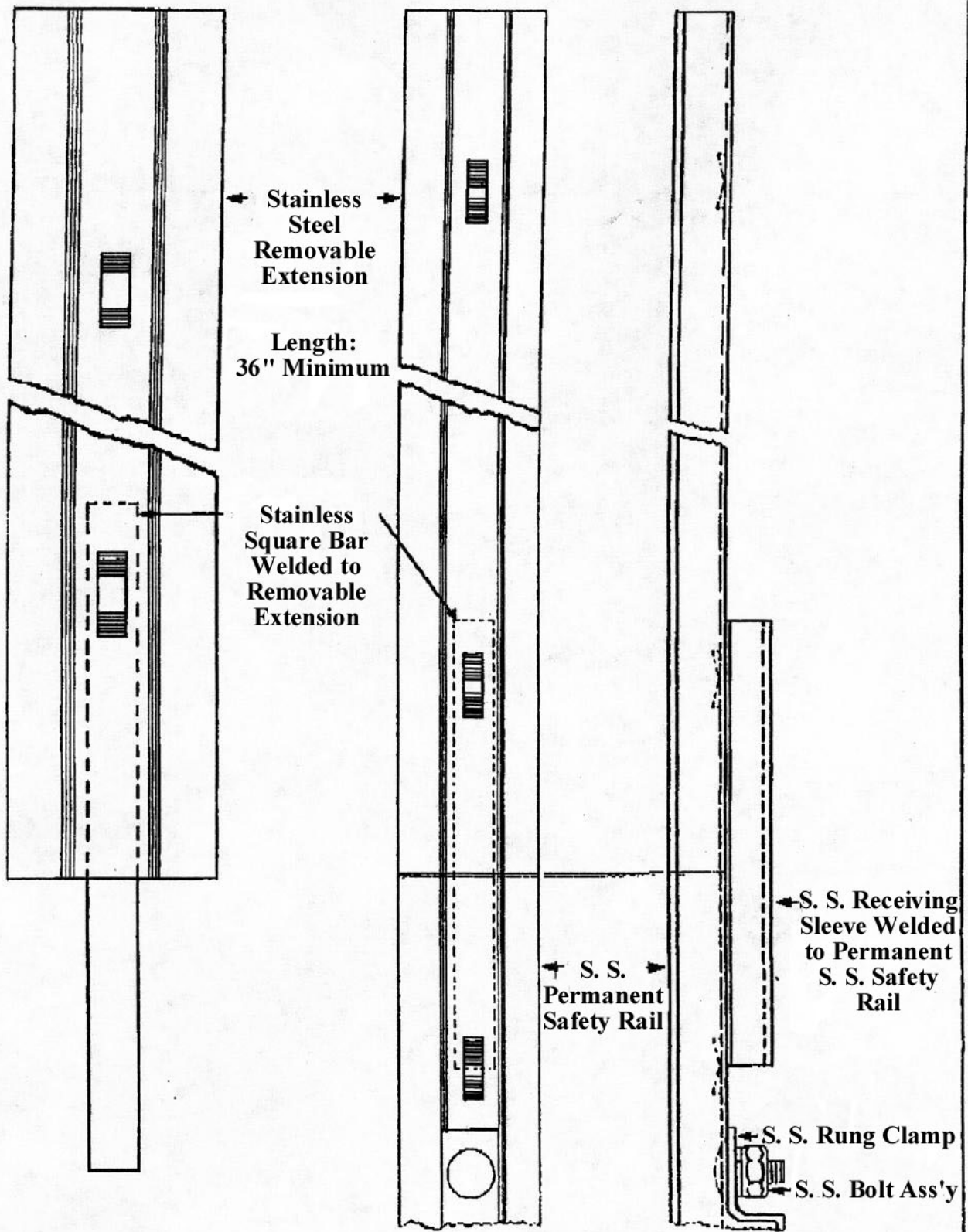


**SAFE APPROACH, LADDER SAFETY SYSTEM**  
**SPECIFICATIONS**

- Rail:                   Stainless Steel 304 and/or 316  
                          Bake formed 1/8" sheet to 2.20" wide by 1" deep  
                          Tensile strength: 75,000 psi  
                          Portrusion die formed stops: 5/16" x 1" x 3/32" every 6"  
                          Die punched holes for splice bars and bracket bolts  
                          \*Standard length: 10ft, or required fractions
- Splice Bar:           Stainless Steel 304 and/or 316  
                          Bar: 1" wide x 1/4" deep x 4-1/2" long  
                          Tensile strength: 75,000 psi  
                          Four hole bolted connection between rail lengths
- Mounting Brackets:  Stainless Steel 304 and/or 316  
                          Bake formed 1/8" sheet  
                          Tensile strength: 75,000 psi  
                          Three mounting brackets per 10ft rail length, max spacing-5ft
- Mounting Hardware: 5/16"-18 x 1-1/4" SS 304 and/or 316 carriage bolt, nut, washer
- Weight:               Rail, clamps, and mounting hardware – approx. 1.65lbs/ft.
- Accessories:         Model 2-1222 – Aluminum safety trolley for use with rail kit  
                          Model 7400-02-02 – Safety Harness  
                          Model 5-1502 – SS removable extension kit





Removable Extension

Removable Extension in Plane on Permanent Safety Rail

Safe Approach Ladder Safety System